



Note: Bases are sold separate from files.



4994S



4996W



4986G

S09

SAFCO® Steel Flat Files

Classic modular files featuring electrically-welded heavy-gauge steel construction, double-thick wrap-around corners, integral cap, and sturdy inner frames. Five-drawer files store up to 500 sheets per unit active filing, 750 sheets semi-active, and 1000 sheets inactive. Ten-drawer files allow for easy retrieval of materials with ten separate 1" deep drawers. All files stack securely up to five units high with anti-slip pads between units to eliminate shifting. Additional features include museum/archival-quality paint finish, steel side roller assembly with case-hardened ball-bearing rollers for smooth drawer operation, rear bumper pads, drawer safety stops, heavy-duty drawer rails for precision alignment, rear drawer hoods, and hinged front depressors. Please note that these are not stock items.

Description	No. Sand	No. White	No. Gray	No. Black	Overall (H x W x D)	Inside (W x D)	Shpg. Wt.	SRP
5-drawer files ★	4994S	4994W	4994G	4994B	16½" x 40¾" x 29¾"	37" x 26"	160 lbs.	\$1,976.90 ea
Closed bases ★	4995S	4995W	4995G	4995B	6" x 40¾" x 26¾"	37" x 26"	22 lbs.	345.45 ea
High bases ★	4975S	4975W	4975G	4975B	20" x 40¾" x 29¾"	37" x 26"	37 lbs.	758.95 ea
5-drawer files ★	4996S	4996W	4996G	4996B	16½" x 46¾" x 35¾"	43" x 32"	195 lbs.	2,286.80 ea
Closed bases ★	4997S	4997W	4997G	4997B	6" x 46¾" x 32¾"	43" x 32"	26 lbs.	370.99 ea
High bases ★	4977S	4977W	4977G	4977B	20" x 46¾" x 35¾"	43" x 32"	43 lbs.	807.35 ea
5-drawer files ★	4998S	4998W	4998G	4998B	16½" x 53¾" x 41¾"	50" x 38"	250 lbs.	2,709.30 ea
Closed bases ★	4999S	4999W	4999G	4999B	6" x 53¾" x 38¾"	50" x 38"	30 lbs.	463.90 ea
High bases ★	4979S	4979W	4979G	4979B	20" x 53¾" x 41¾"	50" x 38"	48 lbs.	841.90 ea
10-drawer files ★	4986S		4986G	4986B	16½" x 46¾" x 35¾"	43" x 32"	278 lbs.	4,039.65 ea
Closed bases ★	4997S	4997W	4997G	4997B	6" x 46¾" x 32¾"	43" x 32"	26 lbs.	370.99 ea
High bases ★	4977S	4977W	4977G	4977B	20" x 46¾" x 35¾"	43" x 32"	43 lbs.	807.35 ea

Closed bases – 6" high High bases – 20" high
Items with ★ are shipped from manufacturer.

Special freight terms apply, please inquire.

**Items are drop shipped
from the manufacturer.**

**S12 T****ALVIN®****Spare Parts for Large Document Binders/Blueprint Clamps**

A convenient assortment of parts to keep on hand. Cast steel wing nuts with zinc coating and cast steel T-bolts are interchangeable with PlanHold, Safco, and Mayline clamps. Contains three pieces each of T-Bolts, wing nuts, wing nut stop screws, jaw springs, and end caps.

No. BPCPARTS
SRP \$19.94 st

S08**SAFCO®****MasterFile 2 Carrier Strips**

Strips are self-adhesive and can be cut into one hundred 24" strips, eighty 30" strips, or fifty 48" strips. Each has pre-printed I.D. blocks. Available in film laminate or transparent polyester.



6551

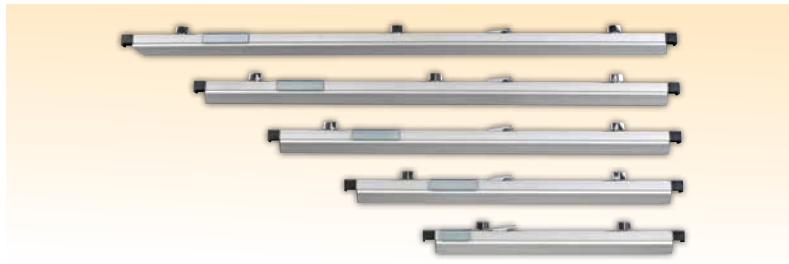
No.	Description	SRP
6551	Film laminate strips, 2¼"w x 217'l	\$202.99 ea
6552	Polyester strips, 2¼"w x 217'l	218.99 ea
6553	Polyester strips, 2½"w x 216'l	203.35 ea

**S12****ALVIN®****Power Wrench**

Designed to tighten large document binders/blueprint clamps when storing or transporting a significant number of prints in a single clamp. To insure a secure grip of documents when hand tightening is not sufficient. Universal fitting accommodates all major brands of clamps and binders.

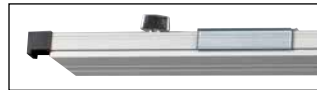
No. PR10

SRP \$26.75 ea

**S12 T****ALVIN®****Large Document Binders/Blueprint Clamps**

A convenient way to store large format documents and blueprints for easy access. Each binder can hold up to 100 prints or 20 lbs. with a secure grip and wide opening jaws for easy loading. For use with all Alvin, Safco, PlanHold, and Mayline rack systems. **Sold by the box of six.**

- Professional grade for office and field use
- Made from high quality extruded aluminum
- Solid steel wing nuts have built-in stops to prevent them from accidental disassembly
- Plastic label holder with blank cardstock included
- Well packaged for transportation, **6 per box**
- Limited lifetime warranty



Enlarged view
of end showing
label holder.

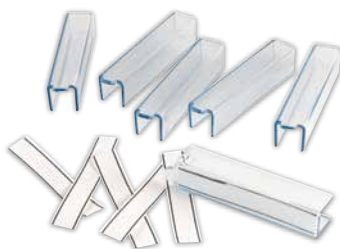
No.	Print Width	Overall Length	Box Weight	SRP
BPC18	18"	20"	5 lbs.	\$181.99 bx
BPC24	24"	26"	7 lbs.	206.95 bx
BPC30	30"	32"	9 lbs.	236.05 bx
BPC36	36"	38"	10 lbs.	289.15 bx
BPC42	42"	44"	12 lbs.	316.15 bx

S08**SAFCO®****Mobile Vertical File**

Built to withstand the rigors of a construction environment and is equally useful in design offices. Steel construction with four ball bearing swivel casters (two lock). Width adjusts to fit 24", 30", or 36" hanging clamps (clamps not included). Holds up to 12 clamps that simply drop in and lift out. Height adjusts to hold drawings up to 48" long. Stores up to 1200 3-mil sheets or 240 lbs. Easy set up. 27½" to 39¼" w x 16" d x 40" to 52" h. Tropic sand color. 25 lbs.

No. 5059

SRP \$615.45 ea

**S12 T****ALVIN®****Large Document Binder/Blueprint Clamp Replacement Label Sleeves**

Label set includes six replacement label sleeves and inserts for BPC24, BPC30, BPC36, and BPC42.

No. BPC-LABEL
SRP \$14.38 pk

**S08****SAFCO®****Mobile Stand**

Rolls on four 3" swivel casters (front two lock). Comes with 12 pivot brackets that move easily from side to side. Adjusts vertically from 43½" to 61½" to accommodate sheets up to 54". Base extends from 27½" to 37½" for balance. Width is 27". Holds up to 12 hanging clamps, any size (clamps not included). Tropic sand color. 47 lbs.

No. 5026

SRP \$1,132.99 ea



S08
SAFCO®
Mobile Plan Center

This filing system holds up to 18 hanging clamps (clamps not included) and rolls smoothly on four swivel casters. Measures 51" high, 25¾" to 43¾" wide, 20½" deep. Width adjusts to accept hanging clamps 24" to 42" long. Tropic sand color. 33 lbs.

No. 5060
SRP \$849.85 ea



S12
BROOKSIDE DESIGN
Open Wall Racks for High Capacity Rolled Blueprint Storage

Organize blueprints or other large rolled materials vertically with this compact, floorspace-saving storage rack. Ideal when needing quick access to rolled documents and drawings. Heavy-duty steel frame with welded posts supports up to 1,200 lbs. of material per rack. Posts are welded at an incline and extend 9" off frame. Overall units are 84"h x 21"w x 11"d and rest on steel feet. Wall brackets that allow space for chair rail or baseboard are included. Finished in a durable, powder-coated, textured black enamel paint. Comes with necessary hardware. 32 lbs.

No.	Description
VWR64	Five 8" bins, four 6" bins, five 4" bins
VWR65	Sixteen 5" bins
SRP \$859.20 ea	

VWR64



S08
SAFCO®
Drop/Lift Wall Rack

Can be mounted at any height for customized convenience. Rack extends less than 12" yet holds up to 12 hanging clamps. The clamps simply drop in for storage and lift out for use (clamps not included). Mounting hardware included. Permanent mount 30" to 48". Tropic sand color. 2 lbs.

No. 5030
SRP \$105.55 ea



S08
SAFCO®
Pivot Wall Rack

Stand comes with 12 quick-reference pivot brackets. Rack will hold any length sheet as long as the unit is mounted high enough. Width is 24" and height is 9½". Holds up to 12 hanging clamps (clamps not included). Mounting hardware included. Tropic sand color. 17 lbs.

No. 5016
SRP \$499.90 ea



S08
SAFCO®
Standard Hanging Clamps

Extruded aluminum clamp holds sheets firmly. Each holds an amazing 20 lb. maximum weight, 100 individual sheets. Features black Aculon plastic wing knobs and hanging clip and is guaranteed for life. **Packaged and sold six/box.**

No.	Clamp Size	Overall Length	Weight	SRP
5001-6	18"	19¾"	6 lbs.	\$395.70 bx
5002-6	24"	25¾"	7 lbs.	442.40 bx
5003-6	30"	31¾"	8 lbs.	495.75 bx
5004-6	36"	37¾"	9 lbs.	518.05 bx
5005-6	42"	43¾"	10 lbs.	548.10 bx



S08
SAFCO®
Print-Lock™ Hanging Clamps

Clamps are fully compatible with all other manufacturer's racks and stands. Constructed of extruded aluminum with polished chrome plated cast alloy wing knobs. Mounting clips are user friendly and will not stick or jam. Wing knobs are guaranteed for life. The entire clamp is warranted for 10 years. Holds 100 sheets or 20 pounds and come with green color label holders. **Packaged and sold six/box.**

No.	Size	Weight	Length	SRP
4301-6	18"	6 lbs.	19¾"	\$284.90 bx
4302-6	24"	7 lbs.	25¾"	308.25 bx
4303-6	30"	8 lbs.	31¾"	364.25 bx
4304-6	36"	9 lbs.	37¾"	435.45 bx
4305-6	42"	10 lbs.	43¾"	468.10 bx



ARF12



ARF20

S12
MADE IN USA
ALVIN®
Upright Roll Files

Durable and compact, constructed of corrugated fiberboard. Includes slotted hand-hole. 15" wide x 12" deep, height is 11½" in front and 22" in back. Shipped flat, easy set up. Shipping weight is 4 lbs.

No.	Slots	Tube Size
ARF12	12	3⅞" x 3⅝"
ARF20	20	2¾" x 2¾"
SRP \$107.90 ea		



3081F



3079

S08
SAFCO®
Upright Roll Files

Compact yet durable, files are constructed of corrugated fiberboard and reinforced with plastic molding for extra-long durability. Includes slotted hand hole and four non-slip rubber feet. Finished in a subtle walnut woodgrain. 15" wide x 12" deep, height is 12" in front and 22" in back. Shipped flat but easily sets up in minutes. 4 lbs.

No.	Slots	Tube Size	SRP
3079	12	3⅞" x 3⅝"	\$92.80 ea
3081F	20	2¾" x 2¾"	98.65 ea

S08

SAFCO®

Tube-Stor KD Roll File

For rolled document storage. Each white corrugated fiberboard file has 16 compartments and are stackable. Assembles quickly. 37" deep.

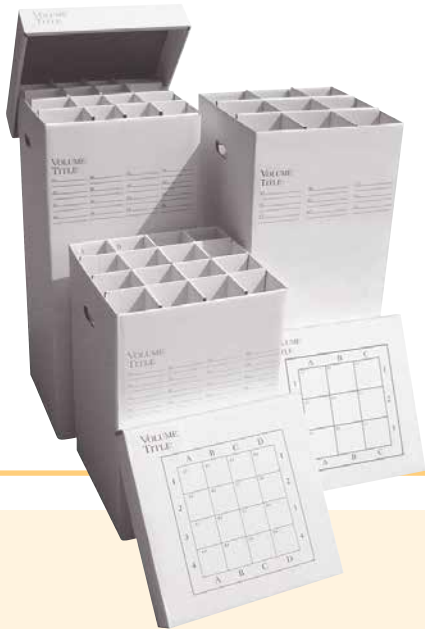
No. 3098

SRP \$114.45 ea

**S08****ADVANCED ORGANIZING SYSTEMS
Manager Rolled Storage**

Economical solution to organizing plans in office or permanent storage. Sturdy, stackable, attractive corrugated cardboard with reinforced bottom. Gray lettering on white background. Side handles with identification labels on interior and exterior. 16"w x 16"h.

No.	Dimensions	SRP
<i>(16) 4" x 4" slots with removable partitions</i>		
MGR-25	25"h	\$91.50 ea
MGR-37	37"h	99.00 ea
<i>(9) – 5 1/4" x 5 1/4" slots</i>		
MGR-25-9	25"	91.50 ea
MGR-37-9	37"	99.20 ea



PHR100-BK



PHR50-BK



PHR200-BK

**HERITAGE ARTS™ S10
Print and Poster Holders**

Display bins designed to hold up to 100 unframed prints and posters. Welded, heavy gauge, 1" square steel tubing with powder electrostatic, scratch-resistant black finish. Locking casters. Assembly required.

No.	Size	SRP
<i>Holds 26" x 32" unframed prints</i>		
PHR50-BK	26" x 25" x 32"	\$314.99 ea
<i>Holds 32" x 40" unframed prints</i>		
PHR100-BK	38" x 25" x 32"	358.75 ea
<i>Double print – holds 17" x 26" unframed prints on bottom and top</i>		
PHR200-BK	22" x 24" x 41"	442.20 ea

For transparent envelopes and archival sheet protectors see page 34.

**S12 T****HERITAGE ARTS™
Steel Print Rack**

Strong, attractive steel print rack in a beautiful, black, baked enamel finish. 6" deep shelf bed holds matted or mounted artwork. Four casters for easy mobility in the studio, at an outdoor show, or in a gallery. 33"h with a 19" opening at top. Assembly needed.

No. MPR10

SRP \$250.00 ea

**S12****CAPPELLETTO
Beechwood Print Rack**

In addition to posters, prints and paintings this print rack can hold drying canvases because of its easily washable rubber ribbed base. Comes with casters and easily operated brakes. Holds canvases and prints up to 26" x 32".

No. CPC70

SRP \$220.00 ea



PR42

S08**TESTRITE®
Canvas Print Racks**

Have easy access, store prints, plans, and organize fine art papers efficiently. Featuring aluminum legs with positive push-pin locks, rubber non-slip caps, and stitched black canvas beds. Folds easily for storage and transport.

No.	Size	SRP
<i>Holds 24" x 30" unframed prints</i>		
PR38	38"h x 24"w	\$139.95 ea
<i>Holds 33" x 36" unframed prints</i>		
PR42	42"h x 36"w	154.99 ea

S12 T

ALVIN® King-Size Roll File

Four 9" x 14" openings make this heavy-duty storage bin an ideal organizer for rolled maps, plans, drawings, and tubes. The four swivel casters give it high mobility. Constructed of white plastic-coated heavy-gauge steel rods. Overall dimensions: 26"h x 28"w x 18"d. Assembly required. Shipping weight 15 lbs.

No. WRF38
SRP \$163.00 ea



S12 T

ALVIN® Wire Bin Roll File

Four 8" x 8" openings make this heavy-duty storage bin an ideal organizer for rolled maps, plans, drawings, and tubes. The four swivel casters give it high mobility. Constructed of white plastic-coated heavy-gauge steel rods. Includes custom-fitted bottom dust protector. Overall dimensions: 30"h x 17"w x 17"d. Assembly required. Shipping weight 10 lbs.

No. WRF34
SRP \$119.50 ea



S12 T

ALVIN® Roll File Cart

Heavy-duty storage bin contains twenty-four 3½" x 4" openings and can accommodate up to a 3½" tube. The four swivel casters give it high mobility. Constructed of white plastic-coated heavy-gauge steel rods. Overall dimensions: 28"h x 24½"w x 17"d. Assembly required. Shipping weight 15 lbs.

No. WTF35
SRP \$95.00 ea



S12 T

ALVIN® Step-Design Roll File

Unique step-design base includes twenty-four 3½" x 3½" openings for easy access to rolled maps, plans, drawings, and tubes. The four swivel casters give it high mobility. Constructed of white plastic-coated heavy-gauge steel rods. Includes custom-fitted bottom dust protector. Overall dimensions: 32"h x 21"w x 14"d. Assembly required. Shipping weight 15 lbs.

No. WSF36
SRP \$139.00 ea

ALVIN® **S12 T** Wire Bin Roll File

Twelve 5½" x 5½" openings make this heavy-duty storage bin an ideal organizer for rolled maps, plans, drawings, and tubes. The four swivel casters give it high mobility. Constructed of black heavy-gauge steel rods. Overall dimensions: 30"h x 24"w x 18"d. Assembly required. Shipping weight 11 lbs.

No. WRF55
SRP \$109.99 ea



S12 T

ALVIN® Wire Bin Roll File

Twenty 4" x 4" openings make this heavy-duty storage bin an ideal organizer for rolled maps, plans, drawings, and tubes. The four swivel casters give it high mobility. Constructed of black heavy-gauge steel rods. Overall dimensions: 30"h x 22"w x 18"d. Assembly required. Shipping weight 11 lbs.

No. WRF40
SRP \$109.99 ea

